

## INSTRUCTIONS

USE ONLY DRY ERASE PENS ON THIS BOARD

### CARE-RECEIVER

This communication board is to be used to assist you in expressing your needs in times of disasters or other emergency situations. If you are the victim of such circumstances and are having problems expressing your needs, simply point to the picture or phrase that represents your situation or identifies an item you need.

### PERSONA QUE RECIBA SERVICIO MÉDICO

Este boletín de información se ha diseñado para asistirle en expresar sus necesidades en momentos de desastres u otras emergencias. Si es víctima de tales circunstancias y tiene problemas o dificultad expresando sus necesidades, simplemente señale la imagen o frase que representa su situación o identifica el artículo que necesita.

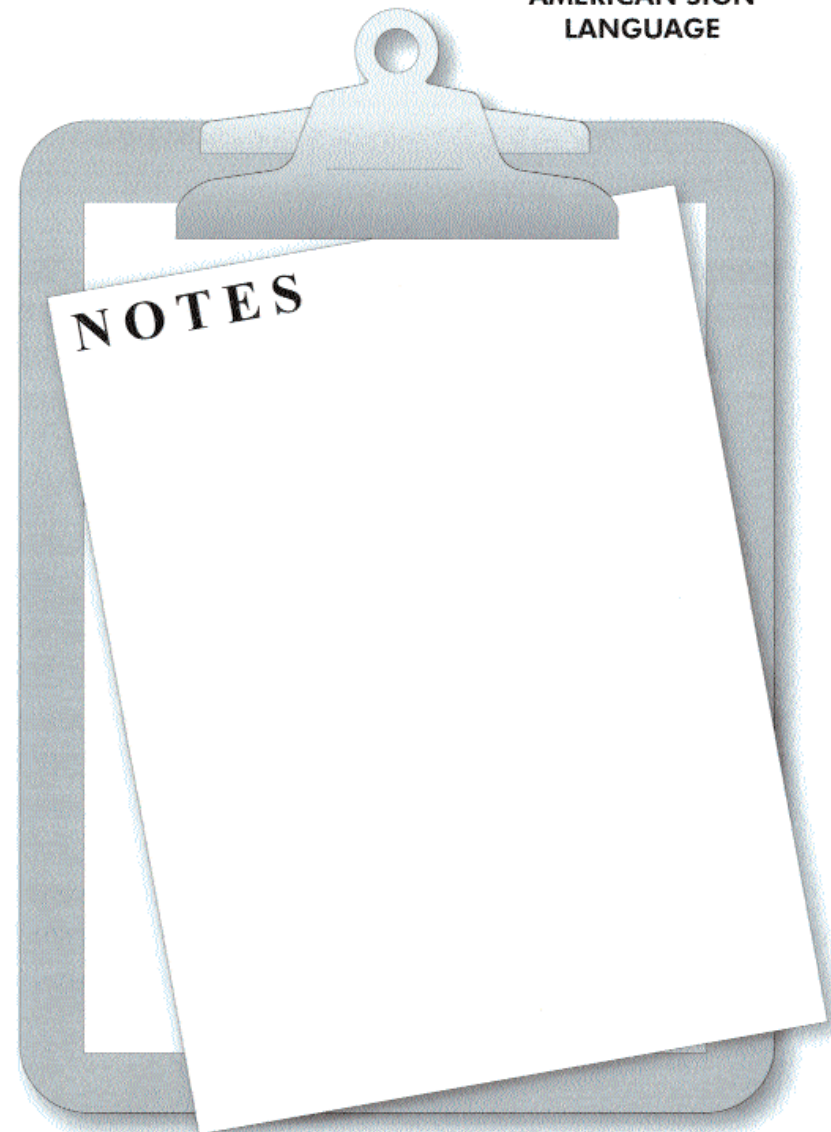
### CARE-GIVER

This communication board has been designed to bridge communication gaps in times of disaster or other emergency situations. The gaps may result from language barriers, disability, age, or the trauma and confusion associated with the event. As a result critical information could be difficult to exchange. By either acknowledging or pointing to the appropriate picture you can better assess health conditions, locate family or friends or provide additional comfort and reassurance to those in need.

**THIS BOARD CAN BE USED AT:**  
**Scene of the Emergency-Shelter-Precinct**  
**Hospital-First Aid Station-Intake Office**  
**All Health Care Facilities**

## Primary Language Need

ALBANIAN - SHQIP	JAPANESE - 日本語
ARABIC - عربي	KOREAN - 한국어
BOSNIAN - BOSANSKI	POLISH - POLSKI
CHINESE - 中文	PORTUGUESE - PORTUGUÊS
CROATIAN - HRVATSKI	RUSSIAN - РУССКИЙ
GREEK - ΕΛΛΗΝΙΚΑ	SERBIAN - СРПСКИ
GUJARATI - ગુજરાતી	SPANISH - ESPAÑOL
HINDI - हिन्दी	URDU - وِردا
ITALIAN - ITALIANO	VIETNAMESE - TIẾNG VIỆT
HAITIAN/CREOLE KREYOL AYISYEN	YIDDISH - ייִדיש
	AMERICAN SIGN LANGUAGE



USE ONLY DRY ERASE PENS ON THIS BOARD

This Picture Board was originally developed by the Metropolitan Chicago Hospital Council through funding provided by the Health Resources and Services Administration.

# Communication Picture Board

## TABLERO DE ASISTENCIA PARA LA COMUNICACIÓN



**For use by Emergency Service Personnel and Frontline Intake Staff to Better Enable Effective Communication with the Public**

**This document was prepared through a collaboration of the New Jersey Department of Health and Senior Services/ Office of Minority and Multicultural Health and the New Jersey Hospital Association**



Jon S. Corzine  
Governor



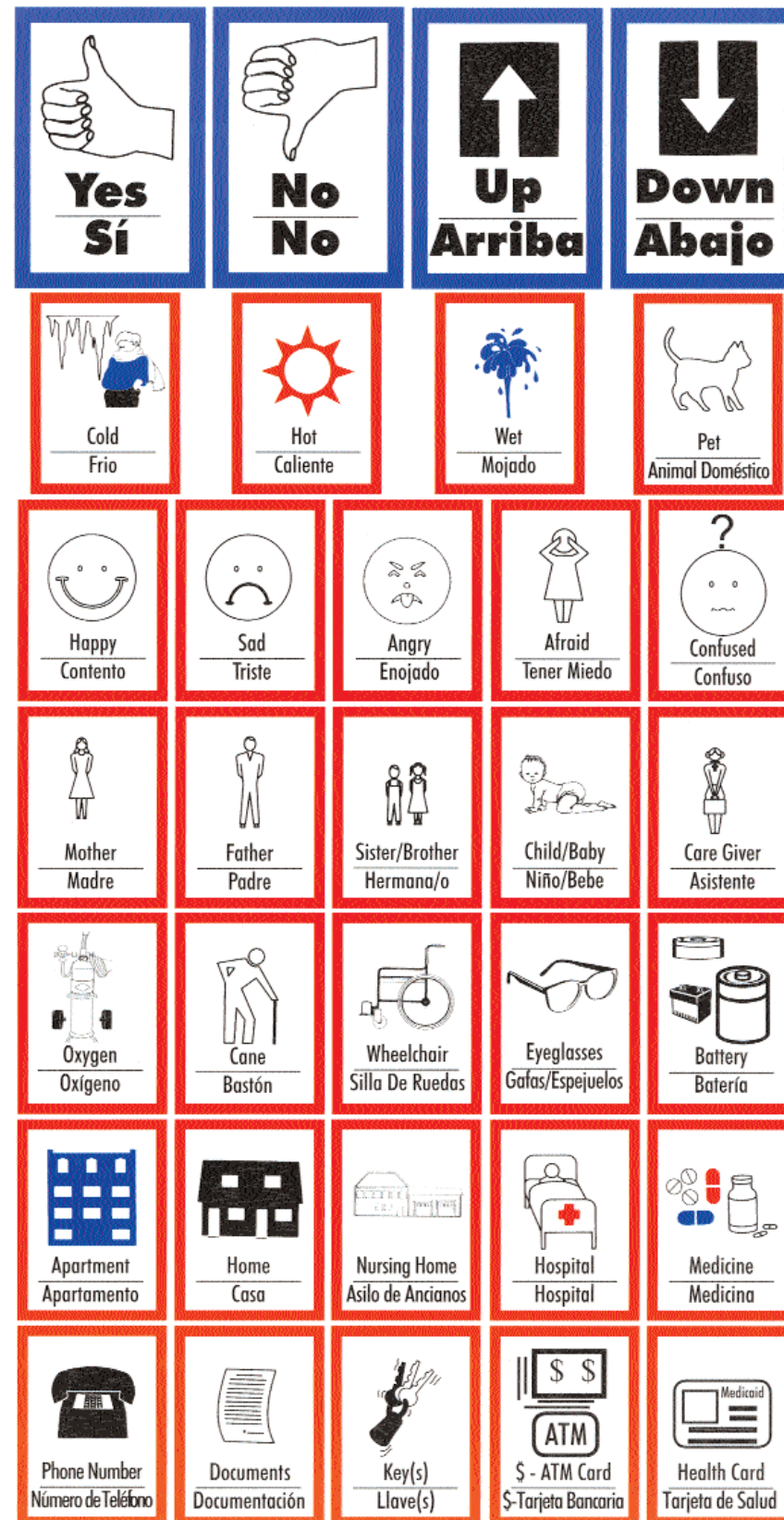
Fred M. Jacobs, M.D., J.D.  
Commissioner



## Point To The Picture to Communicate



A B C (CH) D E F G H I J K L (LL) M  
N (Ñ) O P Q R (RR) S T U V W X Y Z



## Señale la Imágen que Desea Comunicar



1 2 3 4 5 6 7 8 9 10 20 30  
40 50 60 70 80 90 100 1/2 1/4  
AGE - EDAD