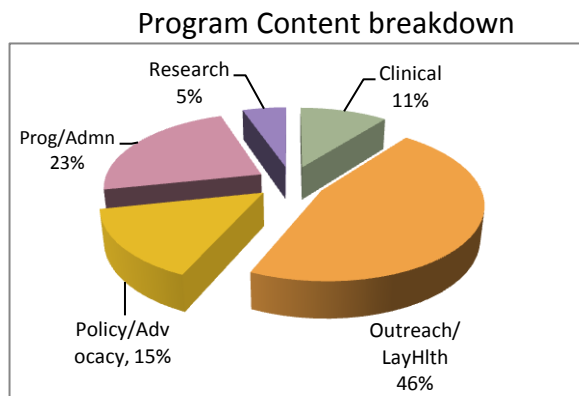


The 22nd East Coast Migrant Health Stream Forum

Every year since the Forum's inception in 1988, the North Carolina Community Health Center Association (NCCHCA) has proudly hosted the East Coast Migrant Stream Forum (ECMSF). This event brings together front-line migrant health professionals, clinicians, administrators and advocates from Migrant/Community Health Centers, community-based and faith-based organizations, as well as government officials from all over the country but drawing primarily from the twelve states along the East Coast. Each year, the camaraderie and excitement among participants transform this event from a typical professional conference to a big family reunion.

The 22nd ECMSF was held from October 22nd to October 24th, 2009 at the Omni Hotel at CNN Center located in the heart of downtown Atlanta, Georgia. Participants were within walking distance to main attractions including the World of Coca-Cola museum and the Georgia Aquarium, the world's largest aquarium.



This year's Forum boasted over 215 participants and 26 multidisciplinary, cutting-edge workshops. Popular workshops included: *¿Qué Pasa? What is Happening with Immigration Reform?*; *Creating Educational Videos on a Shoestring Budget*; *Best Practices for Promotores de Salud HIV Prevention Programs*; *Spotlight on Oral Health*; *Development and Implementation of Health Information Technology at Migrant Health Centers*; *Pharmaceutical Access for MSFWs*,

Learning about Data Collection and Reporting; *Chronic Disease Management*; and *Integrating Behavioral Health at Migrant Community Health Centers*, among others.

The Opening Plenary began with a welcome by E. Benjamin Money, CEO of the North Carolina Community Health Center Association, the Forum's sponsoring organization, and a local greeting by Charles F. Owens, Executive Director of the Georgia Department of Community Health, State Office of Rural Health. Participants listened to keynote presentations from two prominent experts on immigration: Dr. Timothy Dunn, Associate Professor of Sociology at Salisbury University, Salisbury, MD and author of *Blockading the Border and Human Rights: The El Paso Operation that Remade Immigration Enforcement* and Dr. David Spener, Associate Professor of Sociology and Anthropology, Trinity University, San Antonio TX, and author of *Clandestine Crossing, Migrant and Coyotes on the Texas-Mexico Border*. Drawing from their

most recent ethnographic research on crossing the Mexican-U.S. border, the speakers engaged the audience with a discussion about the social and economic impact of U.S. immigration policies.

On Friday morning, the Forum featured a special Thank You Breakfast and Roundtable Discussion where participants had the opportunity to network and discuss farmworker health developments with staff from the Centers for Disease Control and Prevention (CDC). There were 14 discussion tables addressing topics such as women's health, emerging infectious diseases, oral health, and environmental health and hazards. The CDC Thank You Breakfast was a huge success, with both Forum participants and CDC staff remarking on how much they learned.

The East Coast Forum also included updates from the Bureau of Primary Health Care (BPHC) and the National Association of Community Health Centers (NACHC). Dr. Marcia Gomez from BPHC highlighted the service expansion grants made available through the American Recovery and Reinvestment Act, and Mr. John Ruiz from NACHC shared updates on the direction of health care reform and the advocacy accomplishments on behalf of community health centers.

The Closing Lunch and Awards Ceremony honored several of our colleagues for their impressive work in migrant and farmworker health. E. Benjamin Money, CEO of NCCHCA, presented the 2009 Steve Shore Community Catalyst Award to Mr. Rafael Carcache from Southeast Alabama Rural Health Associates. Oscar Gomez, CEO of Health Outreach Partners, Inc., presented the 2009 Sister Cecilia B. Abhold Award to Ms. Allison Lipscomb from Appalachian Regional Health System in North Carolina. Ms. Gayle Lawn-Day, CEO, Migrant Health Promotion, Inc., presented the 2009 Golden Lantern Award to Karin Hoffman and Promotores(as) from Rural Medical Services, Inc.

As is customary at every ECMSF, participants delighted in dinner entertainment on the last night of the conference. This year participants had the opportunity to witness a touching performance entitled, "Line in the Sand," which was written by a group of actors and writers from Catholic Relief Services and performed by a group from The University of Georgia. The performance used the power of theater to convey stories of people affected by U.S./Mexico border migration. The play left the audience with a compelling reminder of the major purpose of the work in migrant health: "people are suffering, pay attention, and do something."

In an effort to continually improve the quality of ECMSF, this year the NCCHCA started to implement a "Tracking to Success" (TTS) process. The process tracks knowledge and skill acquired at the Forum as well as its implementation at participant's programs. This year based on 224 responses, approximately 98% of participants reported that they would remember something from the workshop they attended, and approximately 85% of those reported that they would try something new as a result of their knowledge and skill acquired at the workshop they attended. The follow up phase will reveal the actual implementation and we are hopeful that the knowledge participants gained during the ECMSF will have a lasting impact on their organizations.



Highlights

- The Forum's multi-disciplinary program featured 26 interactive workshops including: a 2-day Lance Armstrong Foundation Promotora Cancer Training, five 4-hour intensive sessions and nineteen 90-minute workshops. Some of the workshop topics were: *¿Qué Pasa? What is Happening with Immigration Reform?*, *Creating Educational Videos on a Shoestring Budget*, *Best Practices for Promotores de Salud HIV Prevention Programs*, *Spotlight on Oral Health*, *Development and Implementation of Health Information Technology at Migrant Health Centers*, *Pharmaceutical Access for MSFWs*, *Learning about Data Collection and Reporting*, *Chronic Disease Management*, *Integrating Behavioral Health at Migrant Community Health Centers*, and *others*.
- The Opening Plenary featured a panel of two prominent experts on immigration: Dr. Timothy Dunn, Associate Professor of Sociology at Salisbury University, Salisbury, MD and author of *Blockading the Border and Human Rights: The El Paso Operation that Remade Immigration Enforcement* and Dr. David Spener, Associate Professor of Sociology and Anthropology, Trinity University, San Antonio TX. and author of *Clandestine Crossing, Migrant and Coyotes on the Texas-Mexico Border*. Tailored from their most recent ethnographic research on the Mexican and U.S. border crossing, speakers engaged the audience with a presentation and discussion about the social and economic impact of U.S. immigration policies.
- On Friday morning, the Forum featured a special Center for Disease Control (CDC) Thank You Breakfast and Roundtable Discussions where participants had the opportunity to network and discuss farmworker health development with CDC staff. There were 15 discussion tables addressing topics such as: women's health, emerging infectious diseases, oral health and environmental health and hazards.
- Friday's lunch featured updates from the Bureau of Primary Health Care (BPHC) and the National Association of Community Health Centers (NACHC). Dr. Gomez from BPHC highlighted the service expansion grants made available through the American Recovery and Reinvestment Act and Mr. John Ruiz spoke about the advocacy accomplishments on behalf of community health centers and the direction of health care reform.
- On Saturday participants had the opportunity to witness a touching performance entitled, "Line in the Sand" written by a group of actors and writers from Catholic Relief Services. The performance used the power of theater to tell personal stories of people affected by U.S./Mexico border migration. The compelling story left the audience with a compelling

message reminding of the major purpose of the work in migrant health: “people are suffering, pay attention, and do something”.

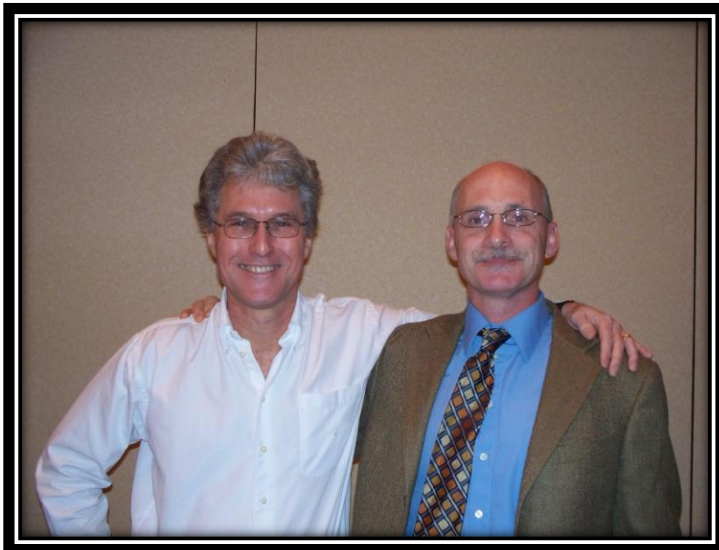
- The closing lunch was highlighted with an Awards Ceremony to honor the 2009 awardees. Awards presented included the 2009 Steve Shore Community Catalyst Award to Mr. Rafael Carcache from Southeast Alabama Rural Health Associates; the 2009 Sister Cecilia B. Abhold Award to Ms. Allison Lipscomb from Appalachian Regional Health System in North Carolina; and the Golden Lantern award to Karin Hoffman and Promotores(as) from Rural Medical Services, Inc. in Tennessee for the Teen Theater Promotor(a) Program and the new Doula Promotor(a) Program.

22nd East Coast Migrant Stream Forum



Attendees enjoy good food, drinks and networking at the welcome reception sponsored by the American Cancer Society.

CDC staff engage participants in conversation about specific health topics and programs while requesting feedback from a front-line view.



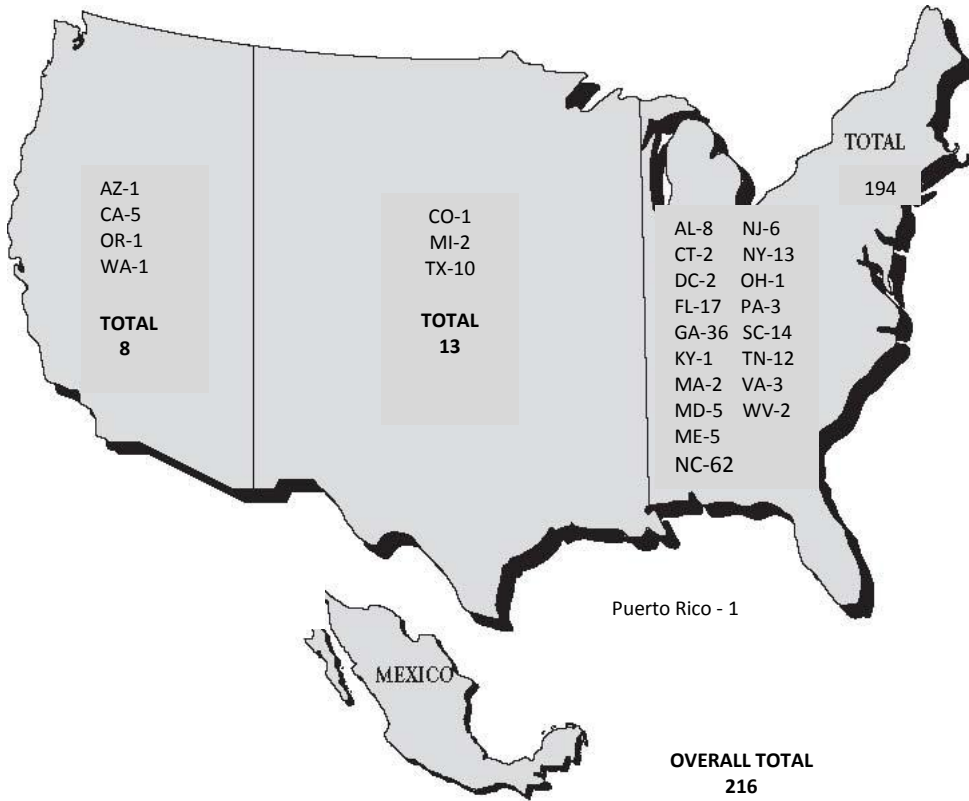
Timothy Dunn and David Spener pose after their fascinating keynote address on immigration and research on the challenges of crossing the Mexico-U.S. border.

*Ms. Gayle Lawn-Day, CEO, Migrant Health Promotion, Inc.,
presents the 2009 Golden Lantern Award to
Rural Medical Services, Inc. in Tennessee.*



*Atlanta, Georgia
October 22-24, 2009*

Participant Demographics



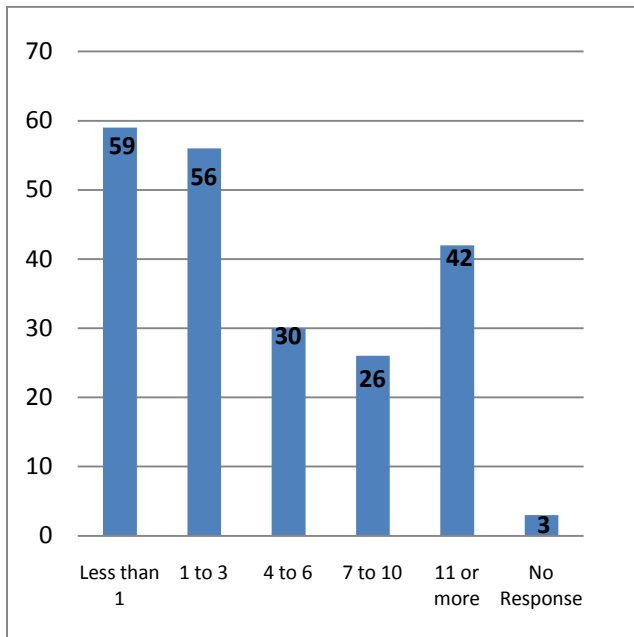
PROFESSION/OCCUPATION

N = 216

Occupation	Participants
Administrator	30
Advocacy /Policy	10
Behavioral Health Provider	1
Clinical Support Staff	2
Dental Professional	2
Executive Director/CEO	16
Farmworker	1
Health/Primary Care Provider	10
Lay Health Worker/Promotor(a)	6
MHC /Board Member	1
Outreach Worker/Coordinator	68
Office Manager	6
Regional Health Coordinator	7
Researcher	13
State/Federal Employee	20
Student	2
Other	21
Total	216

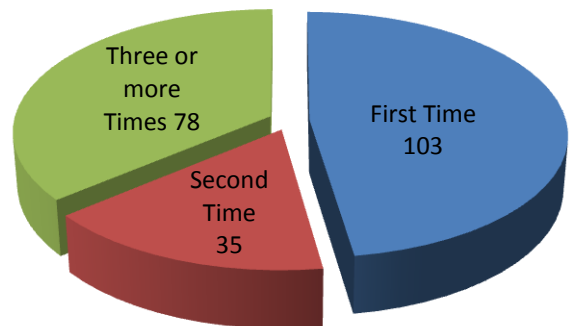
Years in Migrant Health

N = 216



Previously Attended Forums

N = 216



19th Annual Midwest Stream Farmworker Health Forum “Seguimos Adelante: Moving Forward in a Time of Change”

The 19th Annual Midwest Stream Farmworker Health Forum, “*Seguimos Adelante: Moving Forward in a Time of Change*”, was hosted by the National Center for Farmworker Health (NCFH), November 18-21, 2009 in the beautiful beach town of South Padre Island, TX. This year’s conference was a great success, bringing together a total of 232 participants, primarily representing many health centers from the Midwest States such as Illinois, New Mexico, Ohio, and Texas, but also including others such as Alabama, Arizona, California, DC, Georgia, New York, and Washington.

This year we had one of the largest turnouts of board members and lay health workers the Forum has ever seen. A total of 20 board members, predominantly from migrant health centers located in South Texas and 60 lay health workers spanning all Midwest states and also including a large group from South East Georgia, were in attendance. The large presence of lay health workers would not have been possible without the generosity of our partners, The Lance Armstrong Foundation in collaboration with Migrant Clinicians Network and The Southwest Center for Pediatric and Environmental Agriculture at UT Tyler whom provided scholarships for the lay health workers and hosted two popular pre-conference intensives on cancer survivorship and pesticides. Other disciplines with high representation included 30 Program Directors/Coordinators, 24 Clinicians, 17 Executive Directors/CEO’s, and 14 Front Line Staff.

Bobbi Ryder, NCFH CEO officially kicked off the conference during the Opening Plenary. Opening Plenary highlights included keynote speaker Dr. Eduardo Sanchez, former Commissioner of Texas Health and Human Services and current Chief Medical Officer for Blue Cross Blue Shield of Texas. Dr. Sanchez shared how his upbringing in South Texas helped shape his health care beliefs and contributed to his successes in his career. Dr. Sanchez focused his speech on the importance of equitable access to healthy foods, and the importance of eradicating childhood obesity. Dr. Sanchez was followed by guest speakers, Capt. Henry Lopez, Director of Minority and Special Populations for the Bureau of Primary Health Care, Office of Minority and Special Populations and John Ruiz, Assistant Director of Systems Development and Policy Administration, NACHC, with policy updates from their respective agencies.

Aside from these unique offerings, the forum continued with its tradition of providing sensational educational opportunities for those in attendance spanning all 4 educational tracks: lay health/outreach, clinical, research and leadership. Some of the most popular sessions included: *Deeper than the Skin: Clinical Management of Lower Extremity*

Wounds and the ABC's of Telemedicine, an innovative session which focused on the incorporation of distance technology for diagnosis and treatment of things such as wounds. For many participants this was the first they heard of the topic and thought "it would be very effective in providing services to farmworkers". Another popular session was *How History Repeats Itself: H1N1 Influenza and Lessons Learned*, which was very timely for the clinicians in attendance. *Preparing for a Successful 2010 Census* brought awareness to the importance of the census and its data accessing capacity, participants said that "it was very informative and would be useful information for future funding opportunities". *From Program Requirements to Performance Improvement: Connecting the Dots and Documenting your Outcomes* was another very well received session, participants said that "it was an excellent presentation and it provided them with a better understanding of the core program requirements", and finally *The Intersection Between Human Trafficking and Public Health*, introduced a very poignant and a very important issue to the migrant health community.

A topic that is never far from the migrant health forefront is immigration. This year this was presented in both a movie format and a presentation by conference favorite Roger Rosenthal. A private screening of "The Other Side of Immigration" offered the participants a unique insight into the immigration issue. Based on over 700 interviews in Mexican towns where about half the population left to work in the United States, *The Other Side of Immigration* asks why so many Mexicans come to the U.S. and what happens to the families and communities they leave behind. Viewing of the film was a unique opportunity for conference attendants because the film has not been released publicly. Mr. Rosenthal continued the discussion of immigration by providing conference participants with an overview of the immigration issue via a general plenary session, which was accompanied by a question and answer period.

We look forward to seeing you this year in the music capital of the world-Austin TX, for the 20th Annual Midwest Stream Farmworker Health Forum November 17-20, 2010. Be sure to visit our website for more details, including abstract announcements.



- The 19th Annual Midwest Stream Farmworker Health Forum held in South Padre Island Texas was an enormous success! We had 232 participants from a wide array of disciplines in migrant health. This year's conference also included 50 speakers and 33 sessions, spanning all aspects of migrant health care including topics such as: Health Literacy,

Telemedicine, A Clinical Update on HIV and TB, H1N1 Influenza, Family Emergency Preparedness, an update on Immigration Reform, and many more.

- In addition to the wide variety of sessions presented, the conference also provided the participants with an opportunity to visit with over 20 exhibitors whom showcased their diverse array of services and products. This truly was a great way to reinvigorate and renew everyone's commitment to Migrant Health!
- This year's Opening Plenary included keynote speaker Dr. Eduardo Sanchez, former Commissioner of Texas Health and Human Services and current Chief Medical Officer for Blue Cross Shield of Texas.
- A conference highlight was the private screening of "The Other Side of Immigration". This documentary offered the participants a unique insight into the immigration issue. Based on over 700 interviews in Mexican towns where about half the population left to work in the United States, The Other Side of Immigration asks why so many Mexicans come to the U.S. and what happens to the families and communities they leave behind.

19th Annual Midwest Stream Farmworker Health Forum



Erika Garcia from the National Center for Farmworker Health was just one of many exhibitors at this year's Stream Forum.

Conference participants enjoy the dinner/dance celebration.



**John Ruiz provides
the conference
attendees with a
policy update
during the Opening
Plenary**

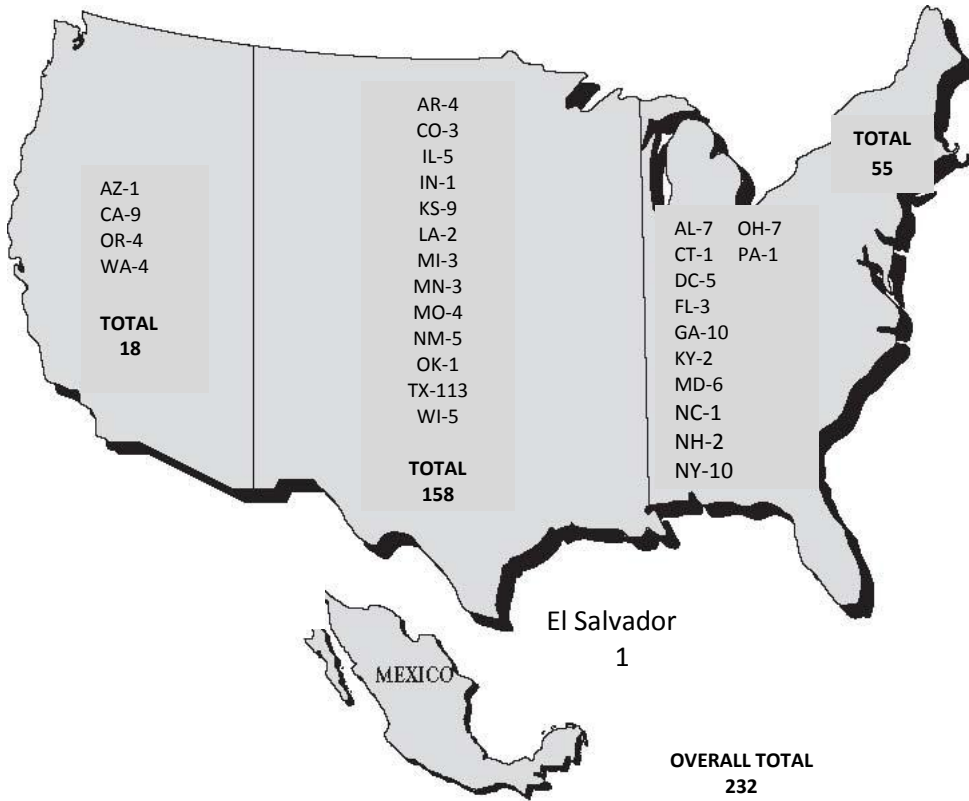


Roger Rosenthal closes the conference with a presentation on immigration reform.



***South Padre Island, Texas
November 19-21, 2009***

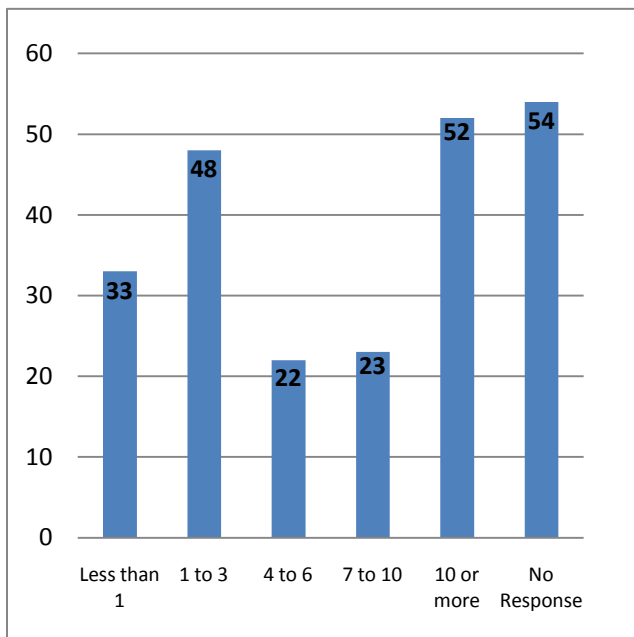
Participant Demographics



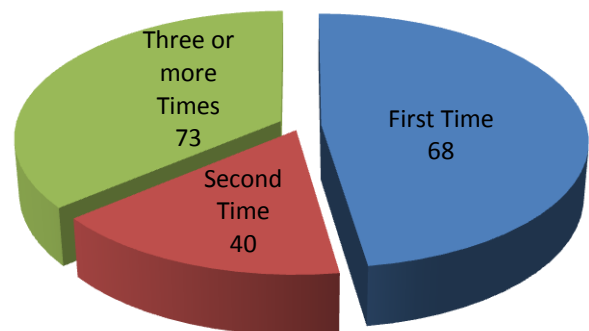
PROFESSION/OCCUPATION N = 232

Occupation	Participants
Administrative Staff	14
Allied Health Provider	0
Board Member	6
Clinical Director/Mgr.	4
Consultant	2
Dental	0
Executive Director/CEO	17
Farmworker	0
Health Educator	7
Lay Health Worker	12
Medical Director	3
Medical Nurse Assistant	1
Migrant Director	2
C/MHC Board Member	14
Migrant Education Rep.	0
Nurse	7
Nurse Practitioner	6
Other	24
Physician	3
Physician Assistant	0
Program Coordinator	19
Program Director	11
Promotor(a)	38
Researcher	2
Social Worker	1
State/Federal Employee	10
Unknown	29
Total	232

Years in Migrant Health N = 232



Previously Attended Forums N = 232



No Response = 51

19th Annual Western Migrant Stream Forum ***Nuestra Comunidad, Nuestro Futuro - Overcoming Barriers, Working for Change***

The 19th Annual Western Migrant Stream Forum was held February 11 – 14, 2010 in Seattle, Washington. Nearly 200 migrant health professionals and advocates came together for education and training, information and resource sharing, coalition building, and policy development. Among the multitude of topics addressed during the conference were: immigration, community organizing, health care access for indigenous farmworkers, occupational health and primary care, chronic disease management, the 2010 Census, and migrant-related HIT strategies.

This year, NWRPCA presented a new format, which organized the conference into three intensive tracks: Health Care Delivery, Outreach & Health Education, and Policy & Advocacy. The purpose of the track format was to provide participants with an opportunity to learn key concepts as well as tangible take-away strategies, and also to allow for greater discussion of these concepts and strategies via a facilitated planning group session. Each of the tracks began with a framework session, and the subsequent educational workshops presented examples of models and best practices. Participants were enthusiastic about this new format, as evidenced by the high level of commitment and terrific ideas generated during the planning group sessions.

Attendees in the Health Care Delivery track addressed issues of workforce development as well as organizational awareness and understanding of migrant health programs. The Outreach and Health Education track discussed strategies for more fully integrating community health workers and *promotores de salud* into the health care delivery system, including models for financing and sustaining these programs. Participants in the Policy and Advocacy track explored strategies to more accurately identify farmworkers, develop models for mobile healthcare services and implement policies that address health equity and access for indigenous farmworkers.

The theme for this year's Forum – *Nuestra Comunidad, Nuestro Futuro – Overcoming Barriers, Working for Change* – was present throughout the conference, and perhaps most notably during the Opening Plenary, which featured a panel addressing health care reform, immigration reform, and the impact that these potential reforms would have on the migrant and seasonal farmworker population. The three speakers included Roger Rosenthal of the Migrant Legal

Action Program, Dr. Julian Perez of Sea Mar Community Health Centers, and Rosalinda Guillen of Community to Community Development.

The central message that emerged from the panel is that health care reform and immigration reform are not mutually exclusive topics. Each of the presenters provided revealing facts, data, and personal stories that emphasized the importance of addressing the social, political, geographic and economic determinants that lead to healthcare disparities in the migrant and seasonal farmworker population.

Another aspect of the conference that resonated with the theme was the screening of the documentary *Frozen Dreams*. This extraordinarily powerful documentary chronicles a community's response to the 2007 Del Monte ICE raid in Portland, Oregon. Members from the Committee for Solidarity and Mutual Support, which is the group that emerged in response to the raid, were present to share their story with participants.

Following the screening, participants had an opportunity to discuss immigration policies, the roots of migration, and strategies for organizing to bring about reform. Despite the obvious challenges, attendees left the discussion feeling energized, recognizing the importance of advocacy and involvement in these important social justice and human rights issues.

Finally, the conference closed with an address from longtime migrant health advocate, Dr. Tina Castañares. Tina's presentation meditated on the changes that she has seen in migrant health throughout the 30 years she has been involved in the movement, but also reflected on the one constant that has endured: social justice. In her own words, "Social justice concerns – that's really what it comes to; social justice for farmworkers. We're concerned about fairness, and we're concerned about equity. We have passion, we have compassion, we value those things; we value the mission, (and) we have a sense of obligation to use our education to serve and advocate for those who have arguably less of a voice than perhaps any other sector of our society – those being migrant and seasonal farmworkers."



Highlights

- Nearly 200 migrant health professionals and advocates came together for education and training, information and resource sharing, coalition building, and policy development. Among the multitude of topics addressed during the conference were: immigration, community organizing, health care access for indigenous farmworkers, occupational health and primary care, chronic disease management, the 2010 Census, and migrant-related HIT strategies.

- This year, NWRPCA presented a new format, which organized the conference into three intensive tracks: Health Care Delivery, Outreach & Health Education, and Policy & Advocacy. The purpose of the track format was to provide participants with an opportunity to learn key concepts as well as tangible take-away strategies, and also to allow for greater discussion of these concepts and strategies via a facilitated planning group session. Each of the tracks began with a framework session, and the subsequent educational workshops presented examples of models and best practices. Participants were enthusiastic about this new format, as evidenced by the high level of commitment and terrific ideas generated during the planning group sessions.
- The Opening Plenary featured a panel addressing health care reform, immigration reform, and the impact that these potential reforms would have on the migrant and seasonal farmworker population. The three speakers included Roger Rosenthal of the Migrant Legal Action Program, Dr. Julian Perez of Sea Mar Community Health Centers, and Rosalinda Guillen of Community to Community Development. The central message that emerged from the panel is that health care reform and immigration reform are not mutually exclusive topics. Each of the presenters provided revealing facts, data and personal stories that emphasized the importance to address the social, political, geographic and economic determinants that lead to healthcare disparities in the migrant and seasonal farmworker population.
- On Saturday evening, participants viewed the extraordinarily powerful documentary *Frozen Dreams*, which chronicles a community's response to the 2007 Del Monte ICE raid in Portland, Oregon. Following the screening, the filmmakers and activists were present to discuss immigration policies, the roots of migration, and strategies for organizing to bring about reform.
- The conference closed with an address from longtime migrant health advocate, Dr. Tina Castañares. Tina's presentation meditated on the changes that she has seen in migrant health throughout her 30 years as a practitioner, but also reflected on the enduring theme of social justice. In her own words, "Social justice concerns – that's really what it comes to; social justice for farmworkers. We're concerned about fairness, and we're concerned about equity. We have passion, we have compassion, we value those things; we value the mission, we have a sense of obligation to use our education to serve and advocate for those who have arguably less of a voice than perhaps any other sector of our society – those being migrant and seasonal *farmworkers*."



**19th Annual Western
Migrant Stream Forum
Highlights**

***Dr. Julian Perez
addresses participants
during the Opening
Plenary.***



**Dr. Tina Castañares
remarks on Migrant
Health's social justice
mission during the
Closing Plenary.**

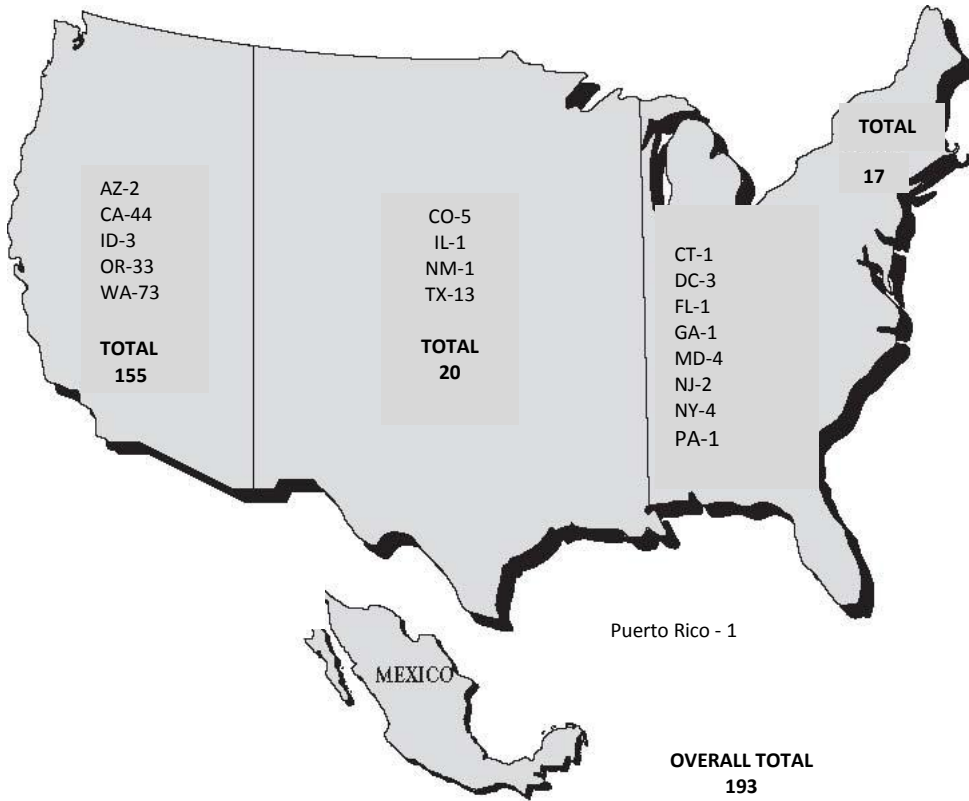
Attendees participate in an issue selection exercise during the Outreach and Health Education track.



Participants provide feedback during the planning group session.

***Seattle Washington
February 11-14, 2010***

Participant Demographics



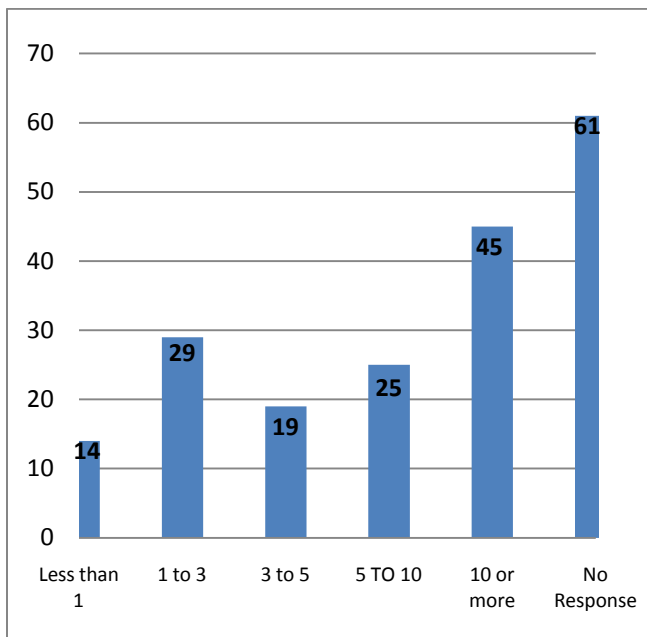
PROFESSION/OCCUPATION

N = 193

Occupation	Participants
Allied Health Provider	0
Clinical Director/Manager	10
Consultant	4
Dental Director	0
Dentist	0
Executive Director	11
Farmworker	1
Gov't Employee	7
Health Educator	21
C/MHC Board Member	0
Medical Director	2
Migrant Education Rep	9
Nurse	4
Nurse Practitioner	3
Outreach/Lay Health Worker	34
Physician	3
Physician Assistant	0
Researcher	16
Social Worker	0
Student	9
No response	59
Total	193

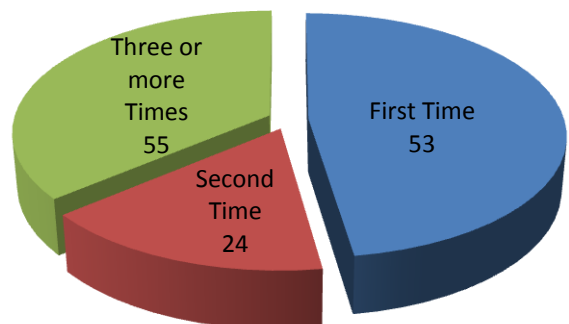
Years in Migrant Health

N = 193



Previously Attended Forums

N = 193



No Response = 61