



Chainsaw and Equipment Safety

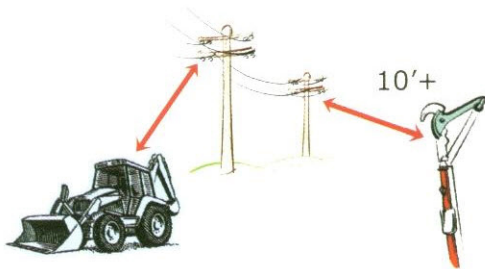


Always Safety
Siempre Seguridad

Be aware of your environment
Esté alerta de su entorno



Be aware of Power Lines
Esté alerta de Líneas de Energía



Quiz / Una Pruebita

- How far should the spoil pile be from each side of a ditch?
¿A qué distancia de la zanja deben estar los montones excavados?

a. 6 inches	a. 6 pulgadas
b. 1 foot	b. 1 pie
c. 2 foot	c. 2 pie
- A backup alarm is not required on a forklift.
El carretilla elevadora no necesita una alarma de reversa.

a. True	a. Verdadero
b. False	b. Falso
- PPE for mowing includes:
El EPP para cortar el césped incluye:

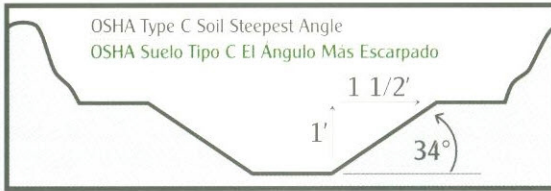
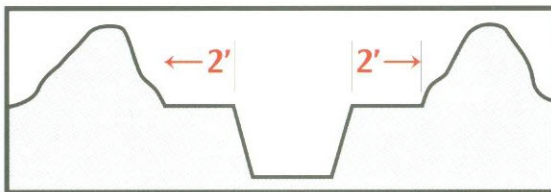
a. Closed toed boots	a. Botas
b. Hearing Protection	b. Protección de oídos
c. Eye Protection	c. Protección de ojos
d. All of the above	d. Todos los anteriores



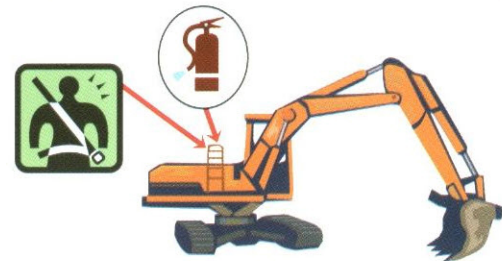
You Need:
Usted Necesita:



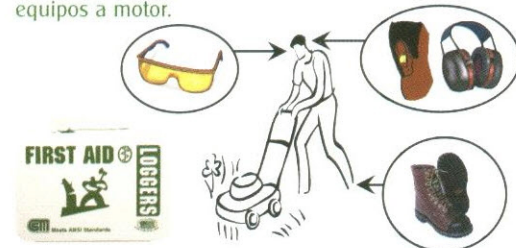
Call (800) 632-4949 BEFORE you Dig or 811
Llame (800) 632-4949 ANTES de Cavar o 811



Think Safety on Heavy Equipment
Piense con Seguridad cuando use maquinaria pesada



Wear Safety Protection using Power Equipment
Use Equipo de Protección Personal cuando use equipos a motor.



This material was produced under grant number 44164-1-23 from the Occupational Safety and Health Administration (OSHA), U.S. Department of Labor. It does not necessarily reflect the views or policies of the U.S. Department of Labor, nor does mention of trade names, commercial products or organizations imply endorsement by the U.S. Government.